



BRAZING MESH BELT FURNACES



Advanced
Industrial
Furnaces

**Dynamism, professionalism,
research and development,
technology,
IVR as a benchmark.**



BRAZING MESH BELT FURNACES



Metal materials in all their applications, from simple household tools to complex aerospace components, require, before or after machining, an heat treatment process.

IVR Advanced Furnaces, represents the solution to this need.

Indicative standard dimensions of some plants:

Mesh belt width in mm	100	200	300	400	500	600	700	1300
Useful height of passage in mm	50	75	100	120	150	200	250	
Length of the heating zone in mm	1000	1750	2500	3000	4000	6000		
Atmosphere	N2+H2		N2+Endogas + CH4+Air					
Cooling system with channel	Natural cooling			Rapid cooling				

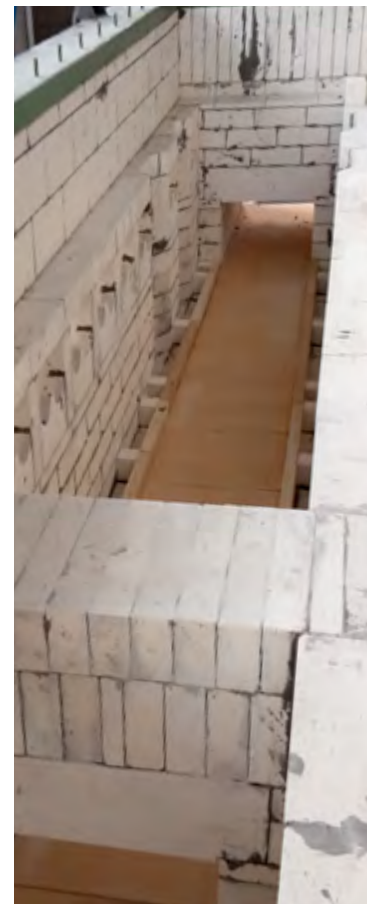
NB: other dimensions are possible and achievable according to the client's needs and specifications.

IVR designs, builds and installs continuous mesh belt systems, with or without muffle, suitable for the heat treatment of various types of metal (copper, bronze, brass, steel, stainless steel, aluminum, etc.).

The furnace is a system, carefully studied according to the needs of the customer, considering all phases: preheating, heating, permanence, atmosphere and cooling process, with the aim of improving, stabilizing, restoring and combining all the mechanical and structural characteristics of the piece, making it suitable for its final function.

Type of heat treatment and applications:

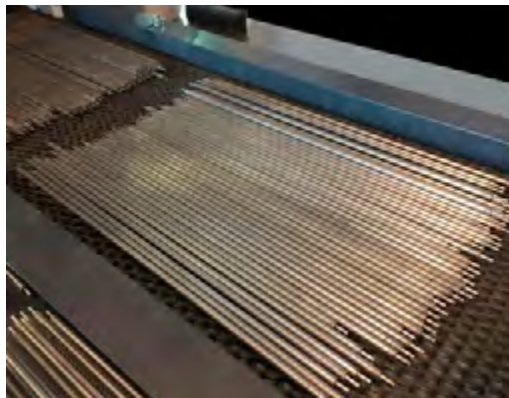
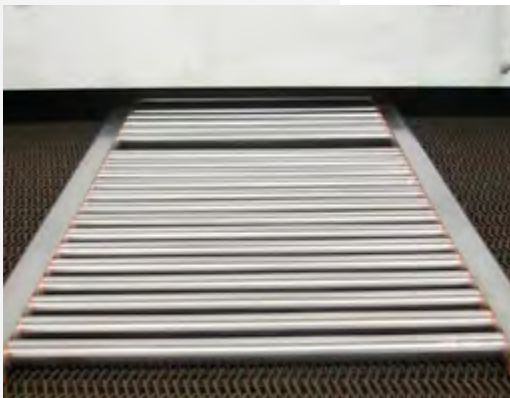
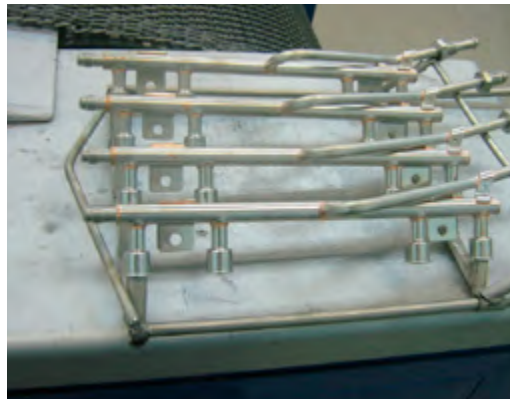
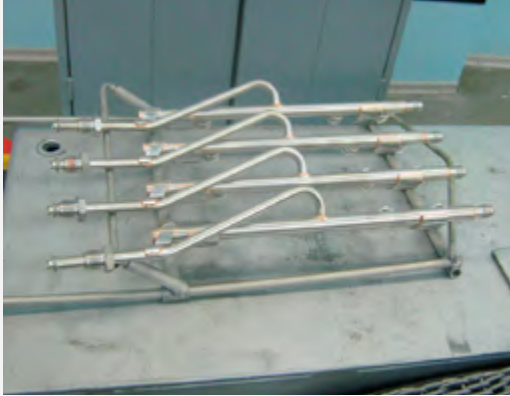
- Brazing of various materials (steel, stainless steel, copper, bronze aluminum, etc.) such as simple and complex fittings, for domestic appliance, bathroom furniture, heat exchangers and in the field of metal-glass electronics. For the heat treatment it is usual practice to place directly on the brazing points brazing pasta or copper/metal rings;
- Black and white annealing, for example for sectors such as cutlery, after molding stainless steel basins, home furnishings, black and white annealing for electric resistances, heat exchangers (etc.);
- Relaxation annealing after molding processes of small and large parts;
- Solution annealing.





BRAZING MESH BELT FURNACES

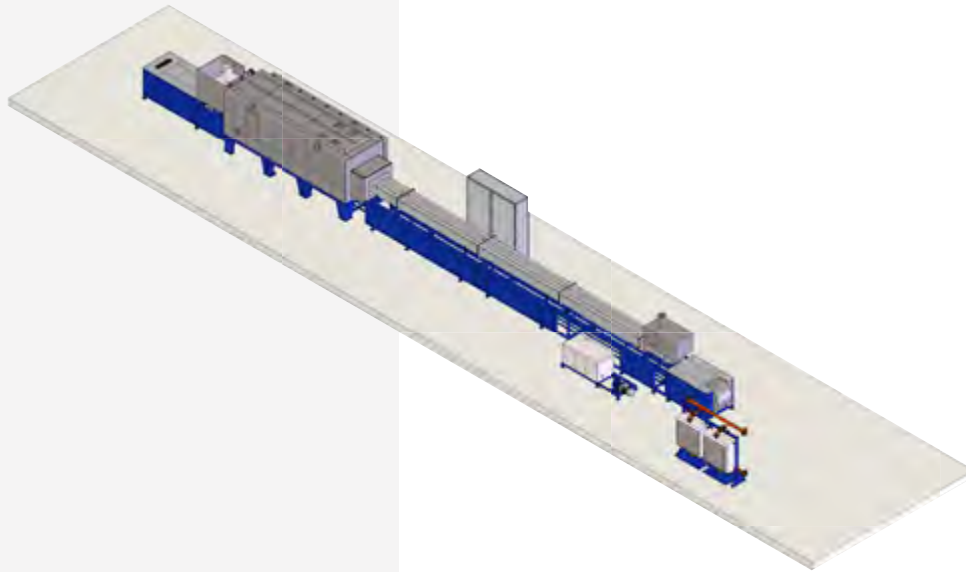
EXAMPLE OF PIECES TO HEAT TREAT



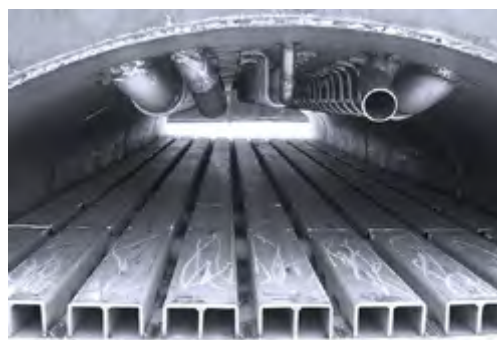
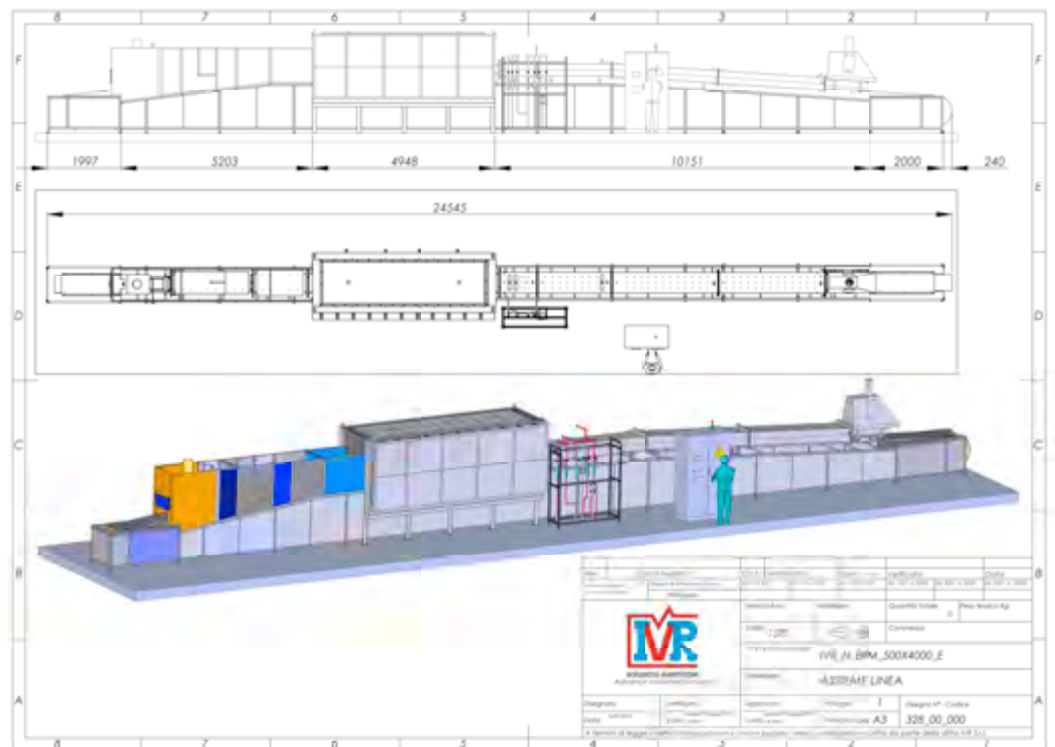


BRAZING MESH BELT FURNACES

EXAMPLE OF REALIZED INSTALLATION



GENERAL BRAZING FURNACE LINE



DONKEY BACK FURNACE LINE